

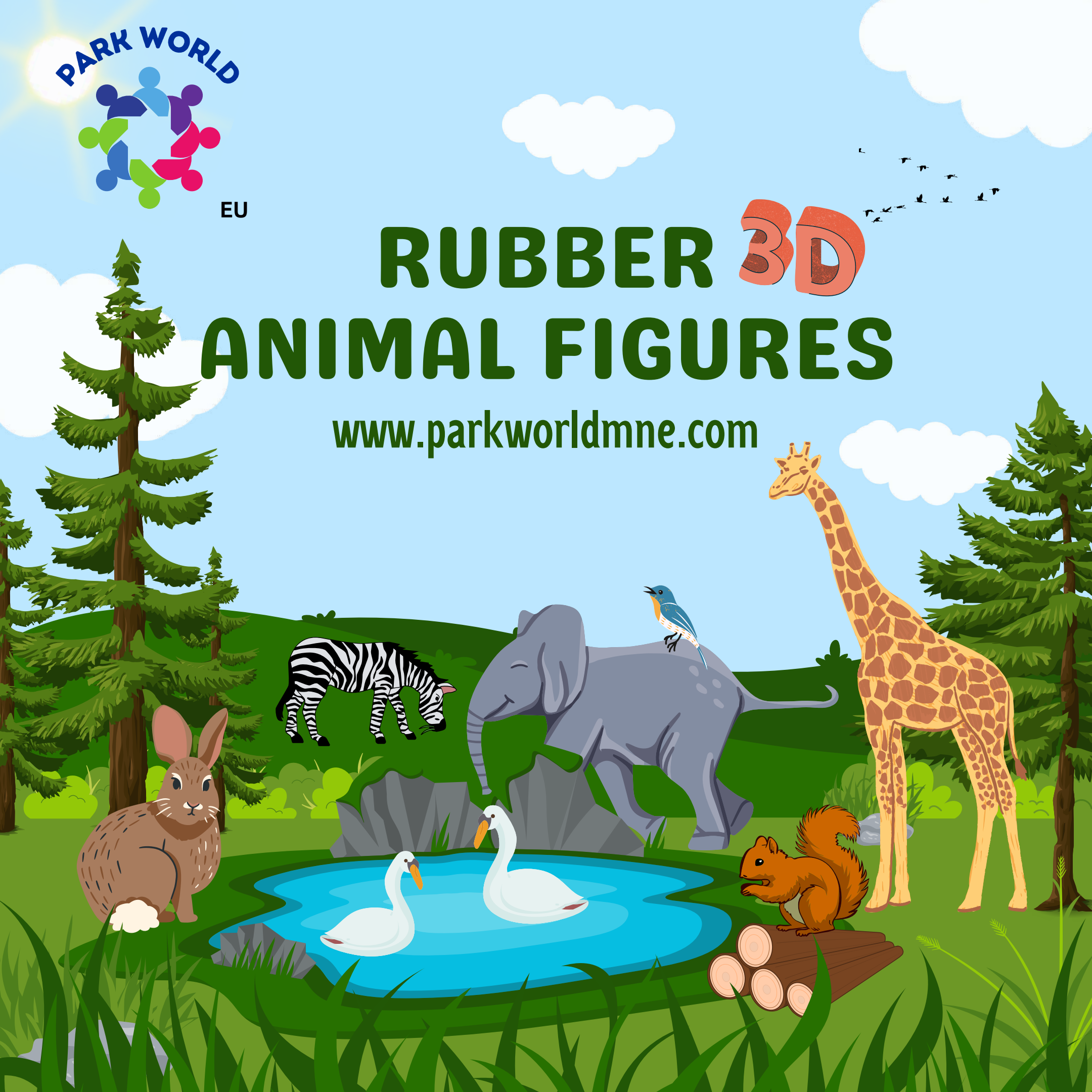
PARK WORLD



EU

# RUBBER 3D ANIMAL FIGURES

[www.parkworldmne.com](http://www.parkworldmne.com)



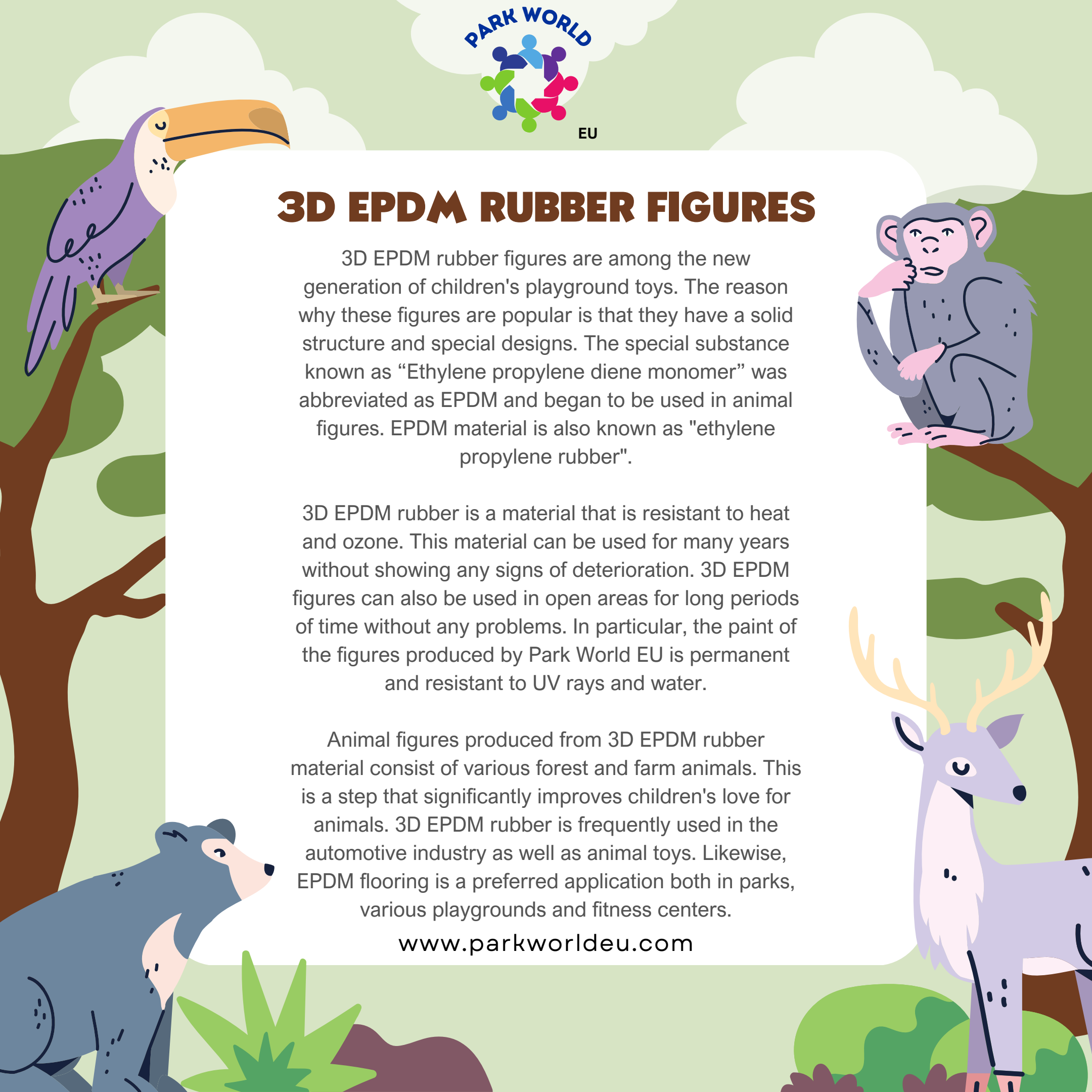
## 3D EPDM RUBBER FIGURES

3D EPDM rubber figures are among the new generation of children's playground toys. The reason why these figures are popular is that they have a solid structure and special designs. The special substance known as "Ethylene propylene diene monomer" was abbreviated as EPDM and began to be used in animal figures. EPDM material is also known as "ethylene propylene rubber".

3D EPDM rubber is a material that is resistant to heat and ozone. This material can be used for many years without showing any signs of deterioration. 3D EPDM figures can also be used in open areas for long periods of time without any problems. In particular, the paint of the figures produced by Park World EU is permanent and resistant to UV rays and water.

Animal figures produced from 3D EPDM rubber material consist of various forest and farm animals. This is a step that significantly improves children's love for animals. 3D EPDM rubber is frequently used in the automotive industry as well as animal toys. Likewise, EPDM flooring is a preferred application both in parks, various playgrounds and fitness centers.

[www.parkworldeu.com](http://www.parkworldeu.com)

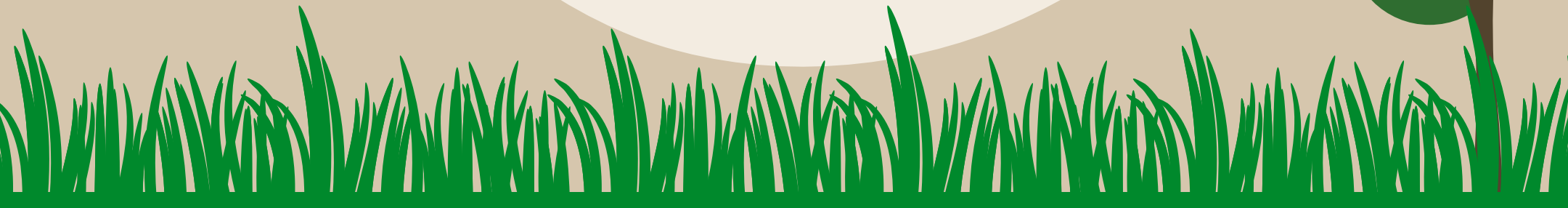


# DINOSAUR





COW



**BEE**





**BEAR**

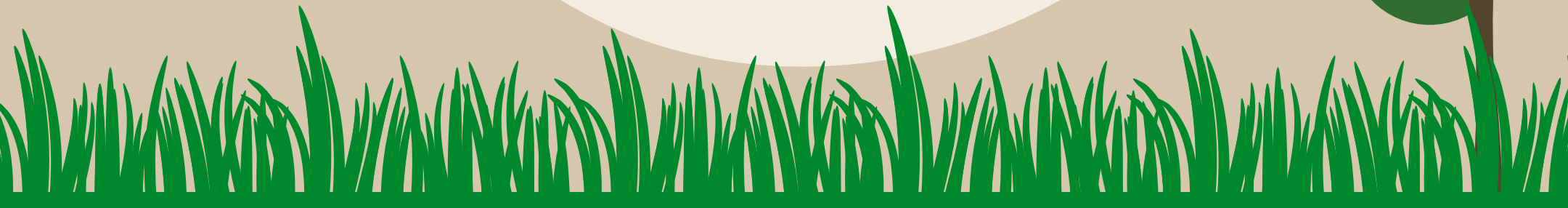


# TURTLE





# FROG





# MUSHROOM



# SQUIRREL





# CROCODILE

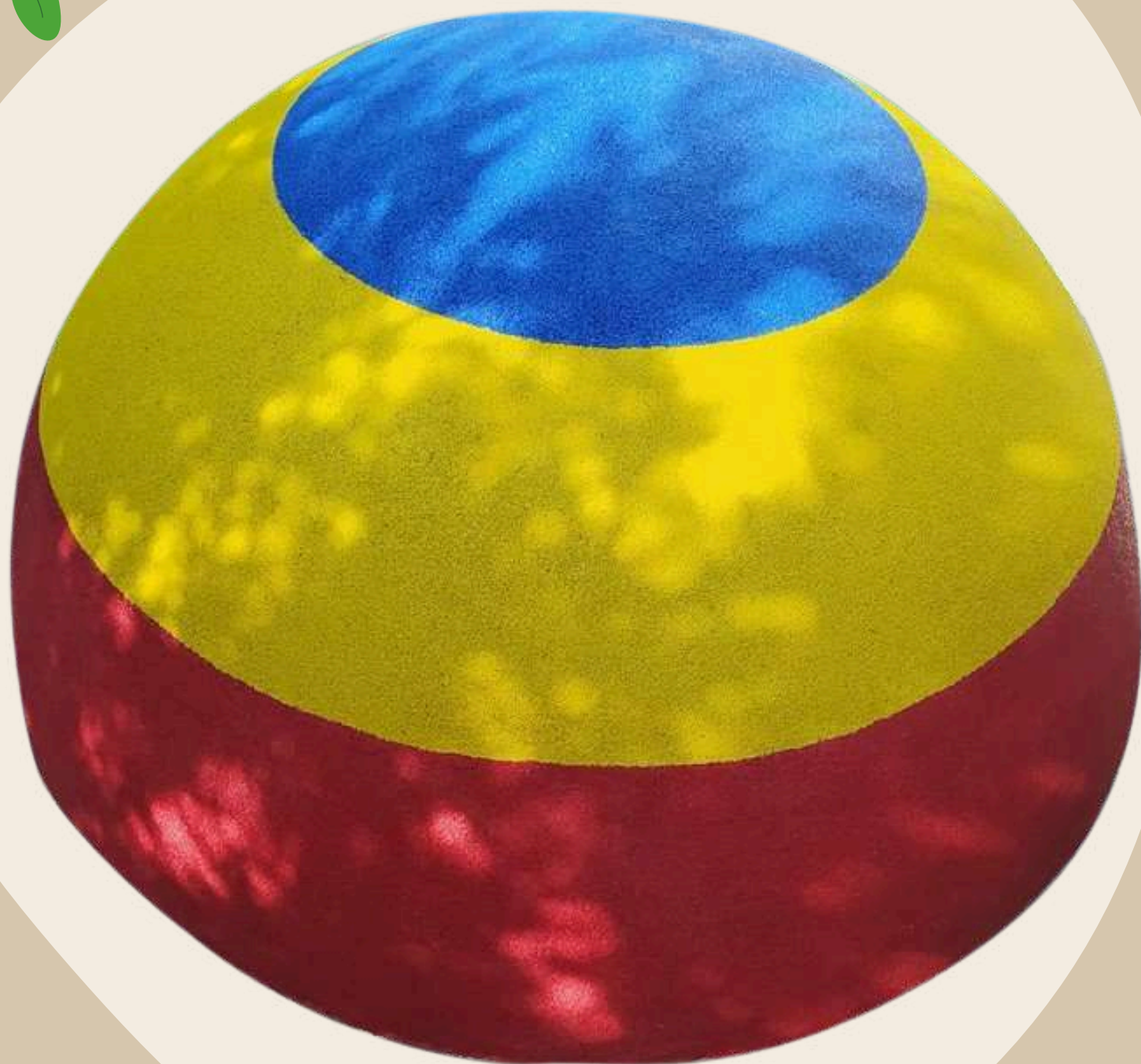


# CATERPILLAR





# HEMISPHERE



# DOLPHIN





**PARK WORLD**



**EU**

**71 – 75 Shelton Street,  
Covent Garden London  
United Kingdom WC2H 9JQ**

**info@parkworldmne.com  
office@parkworldmne.com**

**+448082710534**

