

PARK WORLD



EU

# KIOSK CATALOG



[www.parkworldeu.com](http://www.parkworldeu.com)

[info@parkworldeu.com](mailto:info@parkworldeu.com)



# ABOUT



## SOCIAL UNITS

These are units produced in the architectural structure and form of the Service (Commercial) kiosks that will be created or created in our city. It will bring an innovative approach to administration. Models such as Taxi Stops, WC, shower and laundry.

The continuation of this architectural form will bring integrity and identity to our city. In addition, Kiosk units are units that will provide fast and effective service, accessibility and ease of use.

It is thought that the administration will use kiosk units to increase citizen satisfaction and provide a more modern service.

### Advantages of Kiosk Units:

- **Fast Service:** Kiosk units enable citizens to complete their needs quickly.
- **Accessibility:** Kiosk units located in different regions offer easier access to citizens.
- **Low Cost:** Kiosk units will consist of portable mobile units instead of permanent structural units. It will also reduce costs by reducing personnel needs.



# ABOUT

# COMMERCIAL UNITS



These are units that will serve in four seasons (Cafe - Buffet - Florist - Gift Shop).

- These are units that can be practically installed and serviced immediately, without requiring fixed buildings and construction. The advantage of the system is that it can be moved when necessary without loss of investment and time.



# ABOUT



## DISASTER TRANSFORMATION

Transforming disaster kiosk units means using these kiosk units for different purposes according to predetermined plans in cases of crisis or disaster.

This transformation aims to provide emergency management and post-crisis assistance more effectively and quickly.

Post-disaster kiosk units are portable or modular units designed to provide quick and effective aid, communicate, meet basic needs and restructure society after crisis or disaster situations.

Post-disaster kiosk units are used for rapid response, crisis management, aid distribution and meeting the needs of the community. Planning and coordinating such units in advance will help provide post-disaster relief more effectively.



# ABOUT

# CONSULTING



The operational structure required for the efficient operation of the commercial units, which will be introduced in detail, will be installed by our company within the determined period, and the operational skills will be transferred to the units established within the institution.

A detailed presentation will be prepared specifically for the project after the preliminary meeting.





KIOSK

# TICKET

Municipal ticket offices are physical points where tickets for public transportation services offered by municipalities can be purchased. These booths are places where tickets can be obtained for the use of public transportation vehicles such as city buses, trams, metro and light rail systems.

## SCALE TYPES

- 10 - 15 m<sup>2</sup>
- 18 - 20 m<sup>2</sup>



# KIOSK TICKET







# KIOSK BUFFET





# KIOSK BUFFET





KIOSK

SMALL  
CAFE



[www.parkworldeu.com](http://www.parkworldeu.com)

[info@parkworldeu.com](mailto:info@parkworldeu.com)



# KIOSK

## SMALL CAFE







KIOSK

**BIG  
CAFE**



[www.parkworldeu.com](http://www.parkworldeu.com)

[info@parkworldeu.com](mailto:info@parkworldeu.com)





# KIOSK BIG CAFE



# KIOSK LAUNDRY

They are small-scale laundry units located in public areas or busy areas, serving people to meet their laundry needs. Such kiosks provide services such as washing, drying and folding laundry in accordance with cleanliness and hygiene standards.

## SCALE TYPES

- 10 - 15 m<sup>2</sup>
- 18 - 20 m<sup>2</sup>





# KIOSK LAUNDRY



# KIOSK

## CLASSROOM OR WAREHOUSE

Kiosk classes that can be used in times of crisis refer to portable or modular units designed to quickly meet different needs from warehouse to classroom in times of emergency or crisis. It is used to store and manage the distribution of relief supplies. These kiosks help meet needs quickly and effectively.

### SCALE TYPES

- 10 - 15 m<sup>2</sup>
- 18 - 20 m<sup>2</sup>





# KIOSK



## CLASSROOM / WAREHOUSE



# KIOSK SHOWER

Kiosk shower unit is a hygienic unit usually found in public areas or parks to meet personal needs.





# KIOSK SHOWER



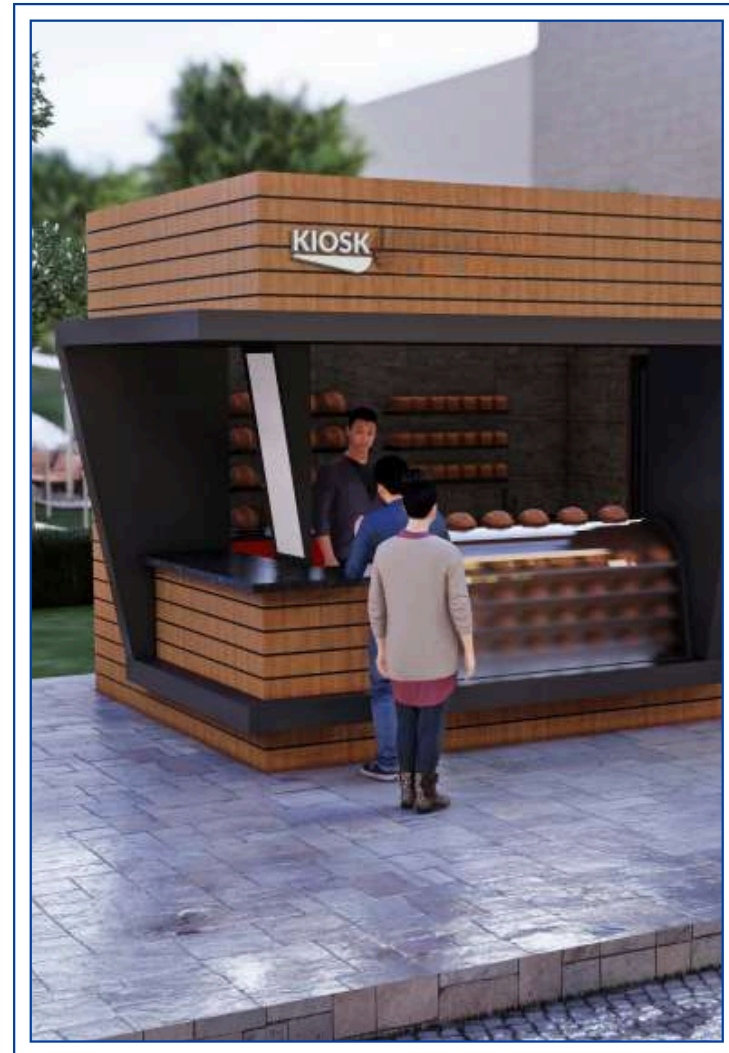


# KIOSK BREAD





# KIOSK BREAD



KIOSK

# GIFT SELLER

These are units that refer to small-scale flower sales points located in public areas or busy areas.

The kiosk gift unit can generally be found in areas such as crowded shopping malls, bus stops, train stations, and street sides.

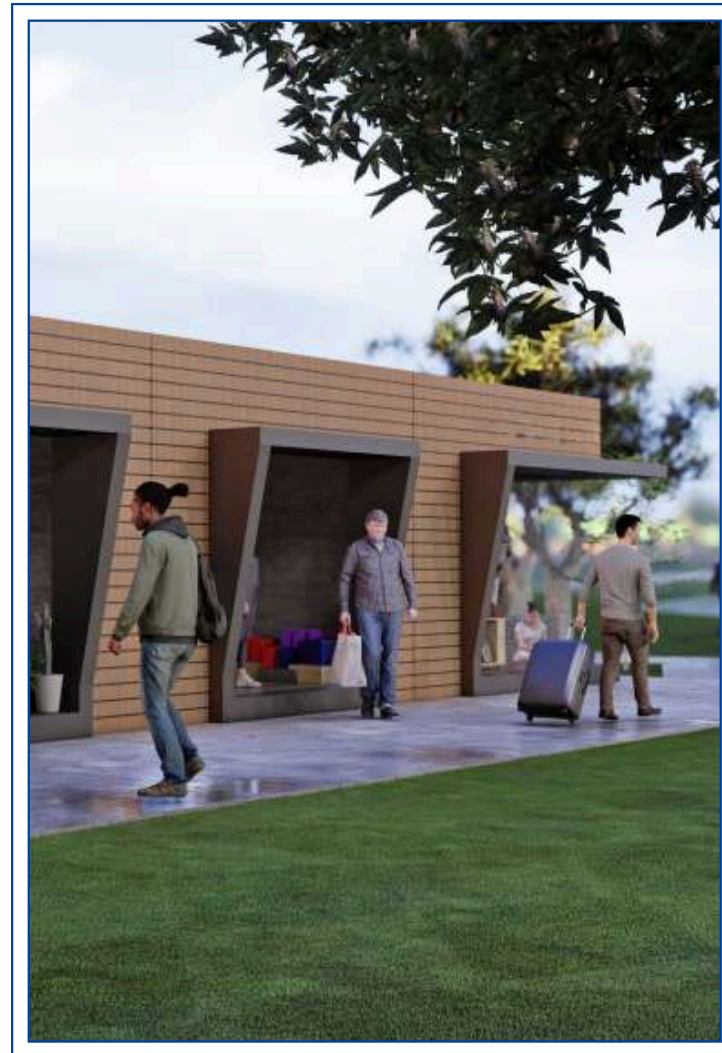
## SCALE TYPES

- 10 - 15 m<sup>2</sup>
- 18 - 20 m<sup>2</sup>





# KIOSK GIFT SELLER



[www.parkworldeu.com](http://www.parkworldeu.com)

[info@parkworldeu.com](mailto:info@parkworldeu.com)





# KIOSK OFFICE

Kiosk office is an ideal unit for offices with low cost. It can be used for small companies or for management offices in public areas.



# KIOSK

# OFFICE



[www.parkworldeu.com](http://www.parkworldeu.com)

[info@parkworldeu.com](mailto:info@parkworldeu.com)



KIOSK

# HEALTH CABIN

Urban health booths refer to small-scale health units established in city centers or dense areas, providing health services for easy access to the public. These booths aim to provide services such as basic healthcare, urgent care, screening, counseling and sometimes medication distribution.

## SCALE TYPES

- 10 - 15 m<sup>2</sup>
- 18 - 20 m<sup>2</sup>





KIOSK

HEALTH CABIN



KIOSK

# WATER POINT

It refers to portable water distribution units located in public areas or busy areas, used to meet people's water needs.

These kiosks are designed to provide clean and drinkable water to people.

In cases of natural disasters or crises, portable water dispensers will be important points for citizens to meet their water needs.

## SCALE TYPES

- 10 - 15 m<sup>2</sup>
- 18 - 20 m<sup>2</sup>





KIOSK

TAXI

Kiosk taxi stands are small-scale units located in public areas or heavily used areas, where people can receive taxi services and wait for a taxi. These facilities are used to make taxi services more organized and accessible. This type of kiosk taxi stands are usually found in areas such as busy streets, shopping malls, bus stops, train stations. It aims to offer passengers a more orderly and comfortable environment to call or wait for a taxi.

### SCALE TYPES

- 10 - 15 m<sup>2</sup>
- 18 - 20 m<sup>2</sup>





# KIOSK

# TAXI



KIOSK

WC

Kiosk WC is a hygienic unit usually found in public areas or parks to meet personal needs.





# KIOSK

# WC



[www.parkworldeu.com](http://www.parkworldeu.com)

[info@parkworldeu.com](mailto:info@parkworldeu.com)





# KIOSK CATALOG

PARK WORLD



**EU**

[www.parkworldeu.com](http://www.parkworldeu.com)  
[info@parkworldeu.com](mailto:info@parkworldeu.com)

M : +448082710534

71 - 75 Shelton Street, Covent  
Garden London United  
Kingdom WC2H 9JQ